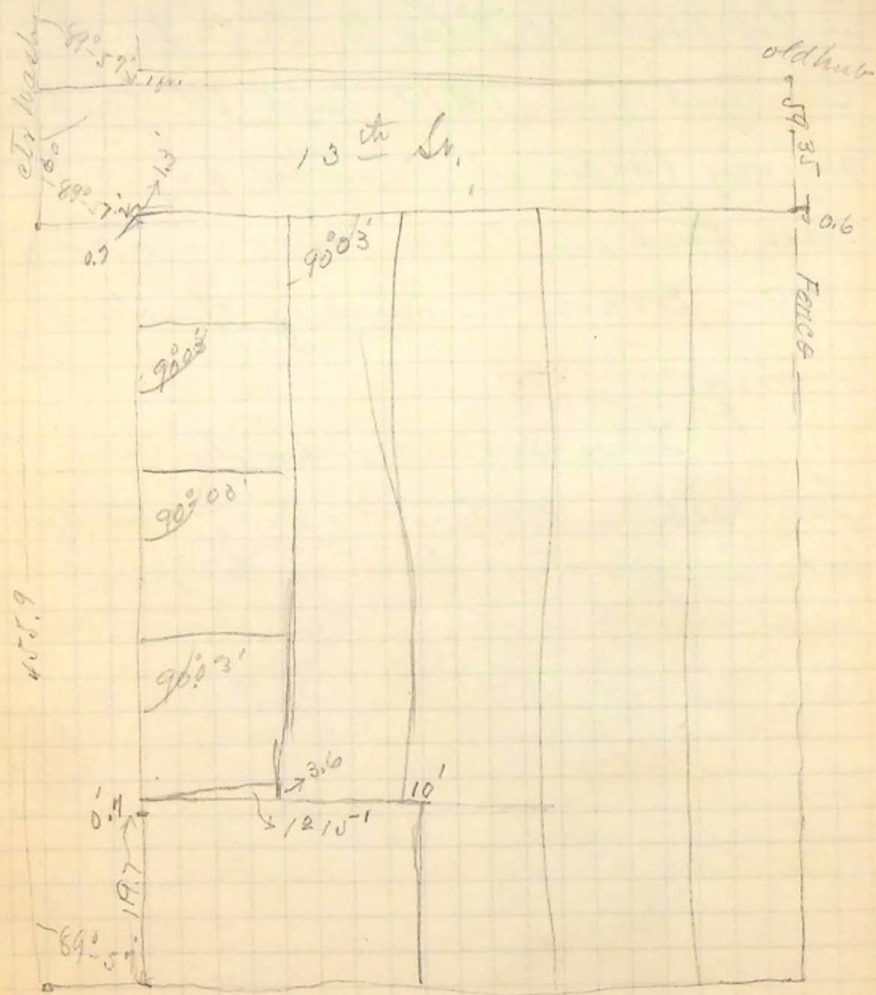
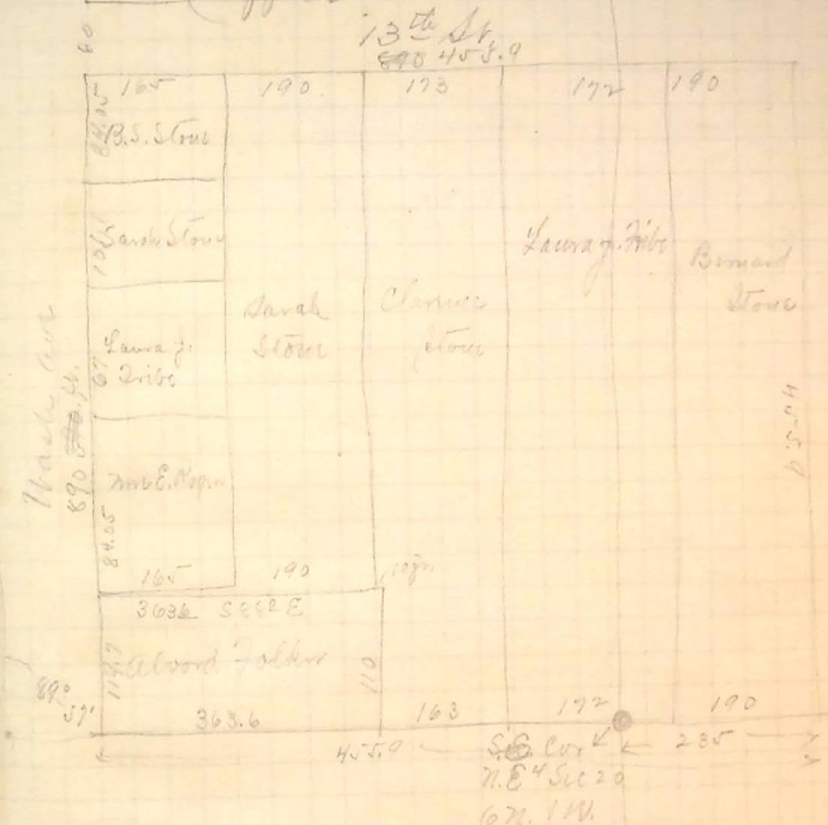


March 18th 1900 - Survey for Merwin J. Stone



(office notes)



Int. City Wash & N. City boundary
 S 81° 34' W 196.5' (129.7') N. B. Cor. D Morris house
 S 26° 51' E 3.72' (24.6') N. W. - Prigs Mill
 S 69° 07' E 1.443' (95.4') N. W. - Tolans house
 Red sandstone 4x4x8 Build on top 6" S 81°
 Az. S 6. Cor. S 6. Sec 20 = 270-45'
 Az. N. 180° 48' (or 180° 50' - 15")
 City measure 26.92 over this meas from lat 204 to City 13th St